

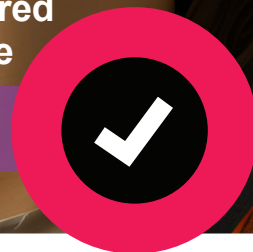


TOOLINE[®]

WE'VE GOT
ALL THE GEAR
YOU WANT.
A REALLY
GREAT RANGE
OF **BEST-VALUE**
BUYS... WITH
GREAT QUALITY
AND LOCAL
NZ SUPPORT.

Preferred
Choice

trusted & reputable brands



INSIDE:

Drilling 4

Cutting 6

Grinding 9

Sanding 10

Woodworking 11

Accessories 15

Lathes 16

Vices 17

Outdoor/Garden 32

Puma™ Air Center 20

Compressors 18

Air Tools 22

Air Hoses 26

and more...

Choose based on performance for price:



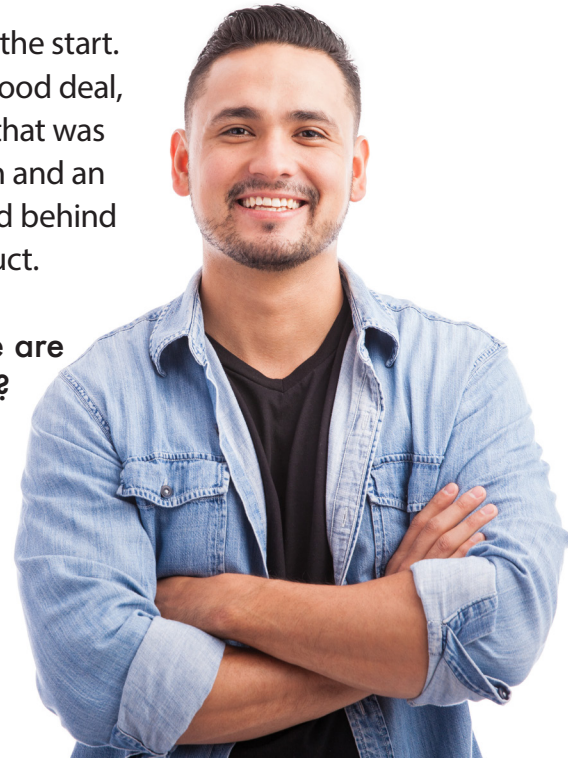
TOOLINE®

Choose based on performance for price:



When you choose a powertool, that's just the start. You want to make sure that you've got a good deal, but also that you'll get the performance that was promised, the workability of good design and an assurance that someone will actually stand behind the sale and the quality of the product.

That's why more and more people are trusting Tooline. Shouldn't you?



Airless Paint Sprayer

Code:	R550
Heavy duty metal construction. Supports 2 guns. Wheels and handle included.	
Max tip size (Single gun "):	.027"
Max tip size (Twin gun "):	.019"
Max pressure (psi):	3,300
Max flow rate (L/min):	4
Hose (m):	15
Motor (W):	2,800
Weight (Kg)	23.6

\$2,789.00 inc GST



RONGPENG

"You have our assurance of our commitment to source the best tools for you, offering the best value we can and standing behind our products with after-sales support, based right here in New Zealand. You can rely on our Tooline name to stand for quality, affordability and performance."

Martin Toon,
Managing Director
Tooline

It's easy to find the products that are right for you...

INSIDE:

Drilling 4

Cutting 6

Grinding 9

Sanding 10

Woodworking 11

Accessories 15

Lathes 16

Vices 17

Outdoor/Garden 32

Puma™ Air Center 20

Compressors 18

Air Tools 22

Air Hoses 26

and more...



PREFERRED CHOICE



AFTER SALES SUPPORT



GREAT FOR THE HOME



POPULAR OPTION



MORE INFO AVAILABLE



PROFESSIONAL GRADE



BEST VALUE BUY

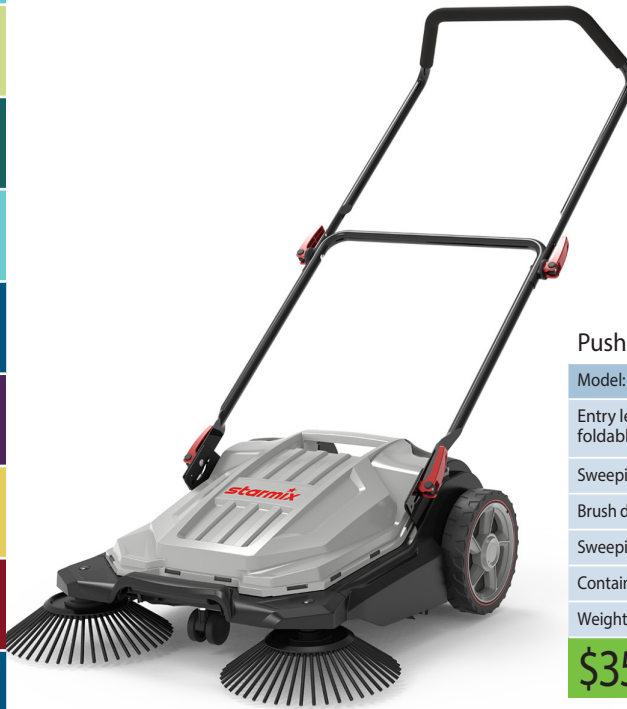


JUST ADDED

All details correct at time of publication. Please refer to product for further details. Design and colour detailing may occasionally differ to those shown here.

Great performance at great prices!

starmix



Push Sweeper

Model:	Star Sweep 65
Entry level push sweeper. Compact due to foldable handle.	
Sweeping performance (m ² /hr):	2,100
Brush drive:	Manual
Sweeping width (cm):	65
Container volume (L):	18
Weight (Kg):	10

\$359.00

inc GST

We proudly source our product from around the world



And that's why you can rely on our quality and proven high performance. We've been dealing with leading Chinese manufacturers for a great many years now and understand how to ensure the best quality at a fair price. We also source from Taiwan and Germany for some of our most popular lines. And, in addition to this, other white-labelled lines carry our well respected Tooline brand. All backed by our local service commitment. It's our promise to you of the best gear at the best price.



Drilling

Drill Stand

Model:	DMSA
Bench mounted stand for hand-held drills.	
Specifications:	
Capacity (mm):	38 - 43
Stroke (mm):	50
Weight (Kg):	7
\$139.00 <small>inc GST</small>	



208mm Bench Drill Press

Model:	DP209B
Small and lightweight for the home workshop.	
Specifications:	
Swing (mm):	208
Speeds (rpm):	5, 500 - 2,500
Chuck:	13mm geared, MT2 - B16
Stroke (mm):	45
Motor (W):	250
Weight (Kg):	12
\$239.00 <small>inc GST</small>	



260mm Bench Drill Press

Model:	DP130B
Compact and sturdy, this is suitable for a wide variety of uses. Most appropriate for the small workshop where space is limited.	
Specifications:	
Swing (mm):	260
Speeds (rpm):	5, 620 - 2,620
Chuck:	16mm geared, MT2-B16
Stroke (mm):	60
Motor (W):	450
Weight (Kg):	26
\$389.00 <small>inc GST</small>	



310mm Bench Drill Press

Model:	DP155B
Compact and sturdy, this is suitable for a wide variety of uses. Most appropriate for the small workshop where space is limited.	
Specifications:	
Swing (mm):	310
Speeds (rpm):	12, 300 - 2,550
Chuck:	16mm geared, MT2
Spindle travel (mm):	60
Motor (W):	375
Weight (Kg):	34
\$499.00 <small>inc GST</small>	



325mm Bench Drill Press

Model:	DP163B
Bench mount makes this ideal for the woodworking shop where space is limited. Inbuilt light.	
Specifications:	
Swing (mm):	325
Speeds (rpm):	16, 180 - 2,770
Chuck:	16mm geared, MT2
Spindle travel (mm):	80
Motor (W):	550
Weight (Kg):	38
\$669.00 <small>inc GST</small>	



360mm Bench Drill Press

Model:	DP180B
With a large coolant collection tray, this is ideal for general engineering workshops.	
Specifications:	
Swing (mm):	360
Speeds (rpm):	16, 180 - 2,770
Chuck:	16mm geared, MT2
Spindle travel (mm):	85
Motor (W):	750
Weight (Kg):	55
<ul style="list-style-type: none"> - Inbuilt light - No volt release switch for safety - Cogged drive belts - Max steel drilling capacity 20mm 	
\$749.00 <small>inc GST</small>	



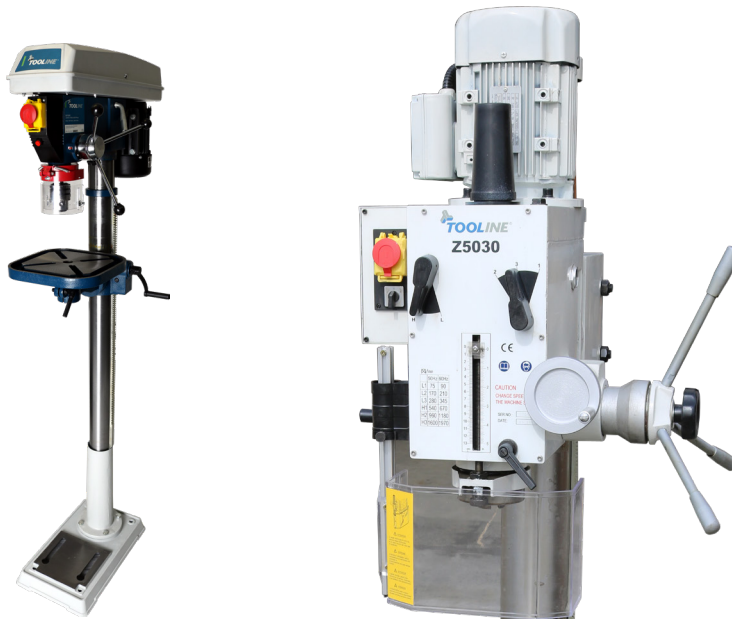
325mm Floor Drill Press

Model: DP163F
 Floor mounted drill press suitable for woodworkers. Aluminium motor housing and pulleys make this unit lightweight and efficient.

Specifications:	
Swing (mm):	325
Speeds (rpm):	16, 180 - 2,770
Chuck:	MT2-B16
Spindle travel (mm):	80
Motor (W):	550
Weight (Kg):	55

- Chuck guard
- Chuck and chuck key
- Cogged drive belt
- Safety switch

\$789.00 inc GST



352mm Floor Drill Press

Model: DP176F
 Sturdy and robust with a coolant tray for use in engineering workshops.

Specifications:	
Swing (mm):	352
Speeds (rpm):	12, 280 - 2,830
Chuck:	16mm geared, MT3
Spindle travel (mm):	85
Motor (W):	750
Weight (Kg):	71

- Aluminium belt pulleys
- Inbuilt light
- No volt release switch for safety
- Cogged drive belts
- Max steel drilling capacity 28mm

\$895.00 inc GST



Geared Head Drill Press

Model:	Z5030
Motor (W):	1100
Max drilling capacity (mm):	30
Swing (mm):	550
Spindle taper:	MT4
Table dimensions (mm):	540 x 470
Weight (Kg):	320
Speeds (6):	75, 170, 280, 540, 960, 1600



510mm Floor Drill Press

Model: DP255F
 Ideal for large engineering workshops. Substantial work table, suitable for coolant collection.

Specifications:	
Swing (mm):	510
Speeds (rpm):	12, 150 - 2,450
Chuck:	16mm geared, MT4
Spindle travel (mm):	120
Motor (W):	1,100
Weight (Kg):	125

- No volt release switch for safety
- Inbuilt light
- Cogged drive belts for increased power transmission
- Increased heat dissipation
- Max steel drilling capacity: 32mm

\$1,629.00 inc GST



Quality at a great price, with reliable performance and local after-sales support - that's our Tooline promise.

For more information, see our products instore or go online...

Cutting

Band Saw – 2 Wheel

Model:	BS240
With a power efficient motor, 80mm throat height and a tiltable cast iron table, slicing veneers, trimming planks or cutting shapes has never been so easy.	

Specifications:	
Throat width (mm):	230
Blade speed (m/s):	11.5
Sawblade length (mm):	1,575
Weight (Kg):	17
Motor (W):	350

\$449.00 inc GST



6,14 tpi Blades Available

Band Saw – 2 Wheel

Model:	BS356
Large cast iron table with tilting 0°/45°. Quick blade change. Stand included.	

Specifications:	
Table size (mm):	548 x 400
Throat width (mm):	340
Blade speeds (m/min):	400, 840
Blade length (mm):	2,560
Max work piece height (mm):	230
Weight (Kg):	88
Motor (W):	1,100

\$1,579.00 inc GST



Band Saw – 2 Wheel

Model:	BS305
Sturdy, two wheel band saw with 305mm throat for a wide variety of wood cutting. Stand included.	

Specifications:	
Throat width (mm):	305
Cutting Height (m):	155
Blade speeds (m/min):	370, 800
Sawblade length (mm):	2,240
Max workpiece (mm):	600 x 600 x 155
Weight (Kg):	60
Motor (W):	750

\$1,119.00 inc GST



Band Saw – Meat Cutting With Mincer

Model:	BS250M
Meat cutting bandsaw with mincer and stand.	

Specifications:	
Table size (stainless steel) (mm):	465 x 600
Max cutting height (mm):	240
Max cutting depth (mm):	250
Blade (mm):	Stainless steel 2,085 x 16 x 4
Weight (Kg):	52
Motor (W):	550

\$895.00 inc GST



Spare Blades Available

Band Saw – Metal Cutting

Model:	MBS116
Sturdy metal cutting bandsaw. Ideal for the small workshop. Stand included. Excellent blade guides allow for accurate work.	

Specifications:	
Cutting size (round) (mm):	100
Cutting size (rectangle) (mm):	110 x 150
Blade speeds (m/min):	20/29/50
Weight (Kg):	61
Motor (W):	370

\$1,199.00 inc GST



Band Saw – Metal Cutting

Model:	MBS180
180mm metal cutting bandsaw with coolant supply and hydraulic damper. Stand included.	

Specifications:	
Capacity 0° (round) (mm):	178
Capacity 0° (square) (mm):	178 x 300
Capacity 45° (round) (mm):	110
Capacity 45° (square) (mm):	110 x 180
Blade speeds (m/min):	4, 34/41/59/98
Blade size (mm):	2,362 x 0.8 x 19
Weight (Kg):	145
Motor (W):	750

\$2,819.00 inc GST



Band Saw - Metal Cutting

Model:	MBS205
205mm swivel head.	

Specifications:	
Blade Speeds (m/min):	31, 50, 60
Capacity round (mm):	205
Rectangular (mm):	205 x 215
Blade (mm):	2,360 x 20 x 0.9
Weight (Kg):	190
Motor (W):	1,100

\$3,800.00 inc GST



Abrasive Cut-off Saw

Model:	ACS356
355mm abrasive saw for metal cutting. Fast release clamp.	

Specifications:	
Blade size (mm):	355 x 25.4
Max Capacity (round) (mm):	90
Max Capacity (rectangle) (mm):	100 x 120
Weight (Kg):	17
Motor (W):	2,200

\$399.00 inc GST



Cut-off Saw – Single Phase

Model:	CS16
Heavy duty, 405mm cut off saw suitable for engineering workshops.	

Specifications:	
Disc Ø (mm):	406 x 3 x 25
Cutting capacity (round) (mm):	40
Box section (mm):	100 x 100 x 10
Flat (mm):	100 x 6
Weight (Kg):	90
Motor (W):	2,200, single phase

\$1,349.00 inc GST



Cut-off Saw – 3 Phase

Model:	CS17 3 Phase
Heavy duty 405mm cut off saw suitable for engineering workshops.	

Specifications:	
Disc Ø (mm):	406 x 25
Cutting capacity (round) (mm):	40
Box section (mm):	100 x 100 x 10
Flat (mm):	100 x 6
Weight (Kg):	90
Motor (W):	2,200, 3 phase

\$1,349.00 inc GST



Table Saw

Model:	TS250
Table saw for the domestic workshop. Stand included.	
Specifications:	
Blade (mm):	254 x 15.9 x 2.8, 40T
Max cutting capacity 90° (mm):	80
Max cutting capacity 45° (mm):	55
Weight (Kg):	21.5
Motor (W):	1,500
\$449.00 <small>inc GST</small>	



Table Saw

Model:	TS255
Sturdy 255mm cast iron top table saw with large ripping capacity. Stand included.	
Specifications:	
Blade (mm):	254 x 30 (40 T)
Max cutting capacity (mm):	80
Max rip width (right) (mm):	762
Max rip width (left) (mm):	330
Weight (Kg):	135
Motor (W):	1,500
\$1,869.00 <small>inc GST</small>	



Site Saw

Model:	TS316C
Sturdy crosscut and ripping saw for use on building sites or at the workshop. Comes with stand and rear extension. Dust extraction.	
Specifications:	
Blade (mm):	315 x 30 x 3.0 (40T)
Tilt:	0-45°
Max cutting depth 90° (mm):	85
Max cutting depth 45° (mm):	46
Table size (mm):	800 x 550

Weight (Kg):	54	Motor (W):	2,000
\$789.00 <small>inc GST</small>			



Panel Sizing Saw

Model:	PS255	Specifications:	
Complete with sliding carriage, and side extension.		Blade (mm):	254 x 30
		Main table (mm):	560 x 800
		Cross extension table (mm):	305 x 800
		Max timber width (mm):	630
		Max timber length (mm):	1,400
		Max depth of cut 90° (mm):	75
		Max depth of cut 45° (mm):	60
		Motor (W):	2,200
		Weight (Kg):	205
		\$3,949.00 <small>inc GST</small>	



GREAT BUYING

Crosscut Saw

Model:	CS211
Lightweight mitre saw for the domestic workshop.	
Specifications:	
Blade (mm):	210 x 15.9 x (24T)
Tilt Range:	0-45°
Weight (Kg):	5.4
Motor (W):	1,400
\$229.00 <small>inc GST</small>	



Dual Bevel Sliding Crosscut Saw

Model:	CSS254
254mm slide saw with laser line, indexed mitre stops, workpiece clamp and sliding fence.	
Specifications:	
Blade (mm):	254 x 15.9 x 2.8 (40T)
Maximum cutting capacity (mm):	305 x 90
Weight (Kg):	21
Motor (W):	1,800
\$519.00 <small>inc GST</small>	

Dual Bevel Sliding Mitre Saw

Model:	CSS306
Professional grade for reliable service. LED and laser light for precise cutting..	
Specifications:	
Blade (mm):	305 x 25.4 x 2.4 48T
Max Cutting Capacity (mm):	355 x 100
Weight (Kg):	27.5
Motor (W):	1,800
\$899.00 <small>inc GST</small>	



Cutting / Grinding / Sharpening

18, 15 TPI Blades,
120 grit Sanding Stick
Available



Scroll Saw

Model:	SS402		
Variable speed with 405mm throat. Engraving tool and light included.			
Specifications:			
Speeds (rpm):	550 – 1,650 Variable		
Max cutting thickness (mm):	50		
Stroke (mm):	20		
Throat (mm):	405		
Weight (Kg):	16.9		
Table tilt:	45°	Motor (W):	125

\$359.00 inc GST



Scroll Saw

Model:	SS457		
Heavy duty, variable speed with 457mm throat. Engraving tool and router table included.			
Specifications:			
Speeds (rpm):	400 - 1,600 Variable		
Flexible shaft speeds (rpm):	1,200 - 4,500rpm		
Blade Stroke (mm):	19		
Throat (mm):	457		
Weight (Kg):	21.5		
Motor (W):	240		

\$689.00 inc GST



Metal Linisher

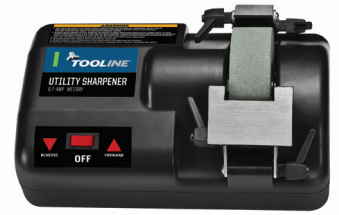
Model:	MS76		
Heavy duty metal linisher for the engineering workshop. Stand included			
Specifications:			
Belt size (mm):	75 x 200, 80 grit		
Belt speed (m/sec):	30		
Working cap. on bed (mm):	650 x 75		
Working cap. on wheel (mm):	200 x 75		
Total rest height range (mm):	100 - 1,050		
Weight (Kg):	72		
Motor (W):	2,200		

\$1,579.00 inc GST

Wet Sharpener

Model:	S4500		
Utility Sharpener with Coolant tray.			
Specifications:			
Wheel (mm):	118 x 38, 120 grit		
Weight (Kg):	4.2		
Motor (W):	70		

\$229.00 inc GST



Drill Bit Sharpener

Model:	DBS13		
Drill bit sharpener. Quick change diamond sharpening wheel.			
Specifications:			
Drill bit sharpening range (mm):	3 - 13		
Point angle fixed:	118°		
Weight (Kg):	2.5		
Motor (W):	80		

\$163.00 inc GST



Drill Bit Sharpener

Model:	BSG13		
11 collets, 3-13mm			
Specifications:			
Point angle:	100°-BS		
Weight (Kg):	10		
Motor (W):	140		

\$1,194.00

trust our value and product performance



**RIGHT TOOL
RIGHT CHOICE
RIGHT PRICE**

Wet Sharpener

Model:	S250
--------	------

10" Low Speed Wet Sharpener. Gear transmission for more torque 220 Grit grinding wheel and leather stropping wheel. Supplied with angle guide and knife holder.

Specifications:

Motor (W):	180
Motor speed (rpm):	95
Dry wheel size (mm):	200 x 30 x 12
Wet wheel size (mm):	250 x 50 x 12
Wet wheel grit:	220
Weight (Kg):	15.3

\$449.00 inc GST



Wet Sharpener

Model:	S216
--------	------

8" Low Speed Wet Sharpener. Gear transmission for more torque 220 Grit grinding wheel and leather stropping wheel. Supplied with angle guide and knife holder.

Specifications:

Motor (W):	180
Motor speed (rpm):	95
Dry wheel size (mm):	200 x 30 x 12
Wet wheel size (mm):	200 x 40 x 12
Wet wheel grit:	220
Weight (Kg):	10.5

\$349.00 inc GST

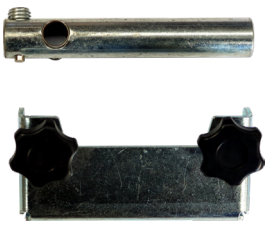
Professional sharpening results made easy

- 220 GRIT GRINDING WHEEL AND LEATHER STROPPING WHEEL
- SUPPLIED WITH ANGLE GRIND AND KNIFE HOLDER
- GEAR TRANSMISSION FOR MORE TORQUE

Dressing device

Code:	TLA322
-------	--------

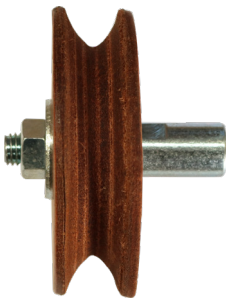
\$61.00 inc GST



Leather honing wheel

Code:	TLA324
-------	--------

\$99.00 inc GST



Axe jig

Code:	TLA316
-------	--------

\$23.00 inc GST



Scissor jig

Code:	TLA314
-------	--------

\$89.00 inc GST



Short knife jig

Code:	TLA312
-------	--------

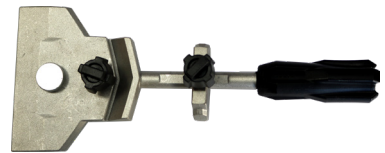
\$59.00 inc GST



Long knife jig

Code:	TLA310
-------	--------

\$59.00 inc GST



Cutting / Grinding

150mm Bench Grinder

Model:	BG151
Designed for New Zealand workshops, this rugged grinder offers lots of power with smooth running features for long life.	
Specifications:	
Stone size (mm):	150 x 20 x 12.75
Spindle (mm):	12
Weight (Kg):	10.5
Motor (W):	250
\$179.00 <small>inc GST</small>	



200mm Bench Grinder

Model:	BG202
Serious DIY grinder with eye shields to help protect the user.	
Specifications:	
Stone size (mm):	200 x 20 x 16
Spindle (mm):	16
Weight (Kg):	12
Motor (W):	300
\$199.00 <small>inc GST</small>	



200mm Bench Grinder

Model:	BG201
This grinder is robust and efficient, a compliment to the New Zealand workshop. Copper wires.	
Specifications:	
Stone size (mm):	200 x 25 x 16
Spindle (mm):	16
Weight (Kg):	13
Motor (W):	300
\$239.00 <small>inc GST</small>	



Heavy Duty Bench Grinder

Model:	BG203
Robust bench grinder suitable for use with accessories. Auto on light. Magnifying lens.	
Specifications:	
Stone size (mm):	200 x 25 x 16
Spindle (mm):	16
Weight (Kg):	18kg
Motor (W):	550
\$282.00 <small>inc GST</small>	



Heavy Duty Bench Grinder

Model:	BG204
200mm Bench Grinder with 20mm Spindle for accessories.	
Specifications:	
Stone size (mm):	260 x 20 x 20
Spindle (mm):	20
Weight (Kg):	22.5
Motor (W):	700
\$359.00 <small>inc GST</small>	



Bench Grinder/Sander

Model:	BGS200
200mm Bench Grinder with wood sanding attachment. Auto on light.	
Specifications:	
Stone size (mm):	200 x 20 x 16
Spindle (mm):	16
Belt size (mm):	50 x 710
Weight (Kg):	16.5
Motor (W):	350
\$359.00 <small>inc GST</small>	



80, 120 Grit Belts Available

Heavy Duty Bench Grinder

Model:	BG250H
This heavy duty bench grinder is built tough. Comes with spindle for polishing mop and suitable for attaching accessories.	
Specifications:	
Stone size (mm):	250 x 25 x 20
Spindle (mm):	20
Weight (Kg):	32.5
Motor (W):	1,100
\$559.00 <small>inc GST</small>	



Heavy Duty Polisher

Model:	BM250
250mm Bench Grinder with double mop attachments.	
Specifications:	
Mop diameter (mm):	250
Spindle (mm):	20
Weight (Kg):	21.5
Motor (W):	750
\$439.00 <small>inc GST</small>	



50mm Bench Grinder Linishing Attachment

Model:	BLA50
Specifications:	
Suitable bench grinders (mm):	16
Power requirement (W):	250
Belt size (mm):	915 x 50
Dimensions (mm):	410 x 120 x 200
Weight (Kg):	5.2
\$282.00 <small>inc GST</small>	



50mm Bench Grinder Linishing Attachment

Model:	BLA122
Specifications:	
Suitable bench grinders (mm):	20
Power requirement (W):	600
Belt size (mm):	1220 x 50
Dimensions (mm):	550 x 210 x 410
Weight (Kg):	7.3
\$389.00 <small>inc GST</small>	



250mm Wet Tile Cutter

Model:	TC250V
Designed for cutting all kinds of tiles: wall, floor, stone and brick.	
Specifications:	
Blade (mm):	250 x 25.4
Max cutting depth 90° (mm):	88
Max cutting depth 45° (mm):	38
Max cutting width (mm):	610
Weight (Kg):	42
Motor (W):	1,650

\$1,369.00

inc GST



Belt and Disc Sander

Model:	BD46C	Specifications:
100x150mm belt and disc sander for the domestic workshop. Cast iron base for stability. Easy adjust belt tracking system. Belt can be used vertically.		
Belt speed (m/sec):	7.35	
Belt size (mm):	100 x 914	
Disc diameter (mm):	150	
Work table tilt:	45°	
Belt table tilt:	90°	
Motor (W):	370	
Weight (Kg):	19	

\$379.00

inc GST

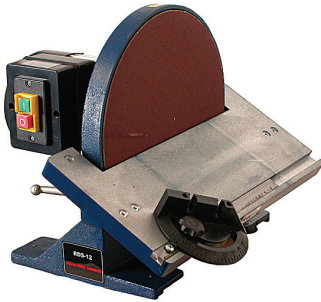


Disc Sander

Model:	DS305
Glue backed sanding disc.	
Specifications:	
Disc diameter (mm):	305
Table size (mm):	440 x 156
Table tilt:	0 - 45°
Weight (Kg):	285
Motor (W):	750

\$539.00

inc GST



Belt and Disc Sander

Model:	BD69F
Large belt and disc sander for serious wood sanding jobs. Stand included.	
Specifications:	
Belt size (mm):	150 x 1,219
Belt speed (m/sec):	5.3
Disc diameter (mm):	230
Table size (mm):	298 x 152
Table tilt:	0 - 45°
Weight (Kg):	58
Motor (W):	370

\$849.00

inc GST



Tile Cutter

Model:	TC180
Portable tile cutter with coolant tray.	
Specifications:	
Blade (mm):	180 x 22
Max cutting depth 90° (mm):	34
Max cutting depth 45° (mm):	21
Weight (Kg):	11.6
Motor (W):	450

\$259.00

inc GST

Belt Sander

Model:	HV80
Horizontal and vertical belt sander. Stand included.	
Specifications:	
Belt speed (m/sec):	13
Belt width (mm):	152
Belt length (mm):	2,010
Max sanding length (mm):	790
Table tilt:	0 - 45°
Weight (Kg):	86
Motor (W):	1,100

\$1,693.00

inc GST



Oscillating Belt Sander

Model:	PE90
Horizontal and vertical belt sander with oscillating belt for fine sanding finish. Stand included.	
Specifications:	
Belt speed (m/sec):	960
Belt width (mm):	152
Belt length (mm):	2,515
Table travel (mm):	80
Weight (Kg):	148
Motor (W):	2,200

\$2,589.00

inc GST



Dust Collection



Dust Collector

Model:	DC10002
Economical dust collector with 5 sizes of hose adapter included.	
Specifications:	
Motor (W):	1100
Capacity (L):	50
Inlet size (mm):	94
Flux (m/h):	900
Weight (Kg):	12

\$319.00 inc GST

Single Port Mini Dust Collector

Model:	DC230
Dust collector for use in confined spaces. Single 100mm inlet.	
Specifications:	
Inlets (mm):	1 x 100
Fan diameter (mm):	230
Weight (Kg):	22
Motor (W):	750

\$449.00 inc GST



Single Port Dust Collector

Model:	DC101
Powerful 750 watt, single port dust collector, suitable for use in both professional and DIY workshop.	
Specifications:	
Inlets (mm):	1 x 100
Fan diameter (mm):	230
Weight (Kg):	30
Motor (W):	750
- Fine micron bag - 57 Litre collection capacity	

\$599.00 inc GST



2 Port Dust Collector

Model:	DC201
Two port, high power dust collector.	
Specifications:	
Inlets (mm):	2 x 100
Speed (rpm):	2,850
Fan diameter (mm):	300
Weight (Kg):	47
Motor (W):	1,500
- Fine micron bag	

\$819.00 inc GST



3 Port Dust Collector

Model:	DC300
Dust collector for the larger workshop.	
Specifications:	
Inlets (mm):	3 x 100
Fan diameter (mm):	305
Weight (Kg):	52
Motor (W):	2,200
- Fine micron bag	

\$979.00 inc GST





Router Table

Model:	RT013
Specifications:	
Table size (mm):	500 x 400
Table height (mm):	360
Table thickness (mm):	25
Table apertures:	20, 42, 90
Weight (Kg):	16

\$429.00 inc GST



WE CHOOSE THE TOOLS WE STOCK WITH CARE, BASED ON THEIR TRUE PERFORMANCE, RELIABILITY AND VALUE FOR MONEY.

Roller Stand

Model:	RS-57-9
Specifications:	
Diameter of roller (mm):	37
Operation height (mm):	650 – 1,100
Weight (Kg):	31.8
Dimension (mm):	1,680 x 510 x 190
\$519.00 <small>inc GST</small>	



RS-57-9

Mitre Saw Stand

Model:	MSS2760
Sturdy, light-weight stand suits most brands of mitre saw. Quick release saw mounts, carry handle. Single leg adjustment.	
Specifications:	
Operation Height (mm):	890
Operation Length (mm):	1160-2760
Max Holding Weight (Kg):	150
Weight (Kg):	23
\$389.00 <small>inc GST</small>	



Mitre Saw Stand

Model:	MSS3310
Sturdy, light-weight stand suits most brands of mitre saw. Quick release saw mounts, carry handle. Single leg adjustment.	
Specifications:	
Operation Height (mm):	890
Operation Length (mm):	1510-3310
Max Holding Weight (Kg):	150
Weight (Kg):	26kg
\$498.00 <small>inc GST</small>	



Roller Stand

Model:	RRS-A
Compact and adjustable roller stand provides support for long work pieces. Sturdy construction.	
Specifications:	
Stand type:	Roller
Operation height (mm):	700 - 1,150
Tube diameter (mm):	38
Weight (Kg):	10.5
Max holding weight (Kg):	200
\$149.00 <small>inc GST</small>	



Jointer/Planer

Model:	J150D
Specifications:	
Table (mm):	1,210 x 255
Cutting width (mm):	153
Max cutting depth (mm):	12.7
Max rabbeting (mm):	12.7
Weight (Kg):	119
Knives:	3
Motor (W):	750
– Stand included	
\$1,729.00 <small>inc GST</small>	



Jointer/Planer

Model:	J200C
Specifications:	
Table (mm):	1,800 x 330
Cutting width (mm):	203
Max cutting depth (mm):	12.7
Max rabbeting (mm):	12.7
Weight (Kg):	184
Motor (W):	1,500
– Stand included	
\$2,789.00 <small>inc GST</small>	



Universal Bench Grinder Stand

Model:	GS-B
Stand to suit all Tooline Bench Grinders and mops.	
Specifications:	
Base (mm):	390 x 390 x 70
Stand (mm):	370 x 370 x 812
Weight (Kg):	15.5
\$169.00 <small>inc GST</small>	



Spindle Moulder

Model:	VSM50
Cast iron worktable 100mm dust port.	
Specifications:	
Speeds (rpm):	11,500 - 24,000
Cutter shank diameter (mm):	6/8/12
Spindle height (mm):	0 - 40
Max cutter diameter (mm):	50
Motor (W):	1,500
Weight (Kg):	21
\$749.00 <small>inc GST</small>	

Ball Roller Stand

Model:	RRS-B
Compact and adjustable roller stand provides support for long work pieces. Sturdy construction.	
Specifications:	
Stand type:	Ball Roller
Operation height (mm):	700 - 1,150
Tube diameter (mm):	38
Weight (Kg):	10.5
Max holding weight (Kg):	200
\$145.00 <small>inc GST</small>	



Dust Extractor Accessory - 4" Elbow

Model:	TLA804	ELBOW
--------	--------	-------

\$35.00
incl GST



Dust Extractor Accessory - 4" Hose x 10 metres

Model:	TLA800	HOSE
--------	--------	------

\$269.00
incl GST



Dust Extractor Accessory - 5" Y Splitter (to 4")

Model:	TLA808	CONNECTOR
--------	--------	-----------

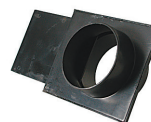
\$35.00
incl GST



Dust Extractor Accessory - 4" Cap

Model:	TLA810	CAP
--------	--------	-----

\$15.00
incl GST



Dust Extractor Accessory - 4" Blast Gate

Model:	TLA802	BLAST GATE
--------	--------	------------

\$28.00
incl GST



Dust Extractor Accessory - 4" Y Connector

Model:	TLA806	CONNECTOR
--------	--------	-----------

\$28.00
incl GST

Portable Thicknesser

Model:	PT318	
4-post thicknesser with anti kickback pawls. Return rollers. Dust deflection plate.		
Specifications:		
Min cutting length (mm):	127	
Max cutting width (mm):	318	
Max cutting depth (mm):	3	
Range of thickness (mm):	5 - 153	
Feed speed (m/min):	8	
Cutter speed (rpm):	9,000	
Weight (Kg):	32	Motor (W): 2,000
\$895.00		inc GST



Blades Available

406mm Thicknesser

Model:	PT104	
Industrial thicknesser. Three knives.		
Specifications:		
Table (mm):	453 x 406	
Max cutting width (mm):	406	
Max depth of cut (mm):	4.1	
Max thickness (mm):	204	
Cutter speed (rpm):	5,000	
Feed rates (fpm):	16,20	
Weight (Kg):	229	
Motor (W):	1,800	
\$3,698.00		inc GST



Accessories

12 Piece Wood Carving Chisel Set

Model:	TLA230	
12 chisels approximately 200mm length.		
\$77.00		inc GST



8 Piece Wood Turning Tool Set

Model:	TLA225	
8 chisels in 65Nm steel. In plastic pouch.		
\$76.00		inc GST



6 Piece Wood Turning Tool Box Set

Model:	TLA218	
6 chisels in HSS. In wooden case.		
\$309.00		inc GST



Turning Tool Set 10mm

Code:	TLA210	
7 piece.		
\$339.00		inc GST



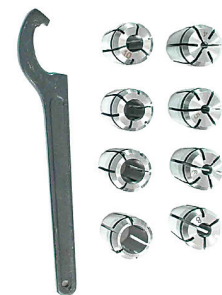
Turning Tool Sets 16mm

Code:	TLA214	
7 piece,		
\$399.00		inc GST



Collet Chuck Set

Model:	ER 16 MT3	
Collet chuck set MT3.		
\$297.00		inc GST



Collet Chuck Set

Model:	ER 16 MT4	
Collet chuck set MT4.		
\$297.00		inc GST

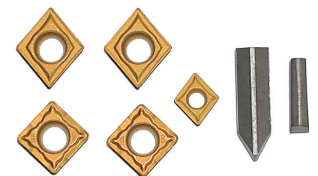
Turning Tool Set of Tips 10mm

Code:	TLA211	
7 tips for 10mm turning tools.		
\$199.00		inc GST



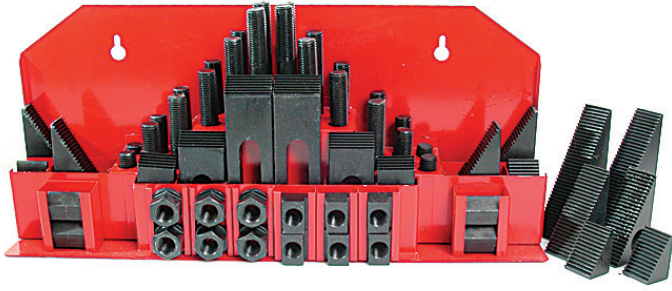
Turning Tool Set of Tips 16mm

Code:	TLA215	
7 tips for 16mm turning tools.		
\$199.00		inc GST



SPEC SHEETS AVAILABLE FOR MOST PRODUCTS ONLINE, FOR ALL YOU NEED TO KNOW

Accessories



58 Piece Steel Clamp Set M10

Model:	SCK 10
\$194.00 <small>inc GST</small>	

58 Piece Steel Clamp Set M12

Model:	SCK 12
\$215.00 <small>inc GST</small>	

58 Piece Steel Clamp Set M14

Model:	SCK 14
\$247.00 <small>inc GST</small>	

58 Piece Steel Clamp Set M16

Model:	SCK 16
\$339.00 <small>inc GST</small>	

Dovetail Jig

Model:	DJ12
Comb:	1/2"
Max width (mm):	300
Thickness (mm):	8 – 32
Adjustable stops:	✓
\$329.00 <small>inc GST</small>	



Wheels (Mobile base)

Model:	MB500
Wheel set for machines up to 220kg.	
\$229.00 <small>inc GST</small>	



Scroll Saw Sanding Stick

Model:	SSR7-129
Size (mm):	7 round
Grit:	120
\$11.00 <small>inc GST</small>	



QUALITY & PERFORMANCE

YOU CAN'T TRUST YOUR WORK TO SECOND BEST...



PERFORMANCE AND VALUE FOR MONEY ADD UP TO THE RIGHT PRODUCT FOR YOU. CHOOSE WISELY, BASED ON WHAT YOU GET FOR WHAT YOU'RE PAYING.

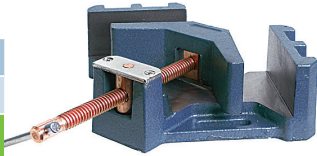


We're always adding and updating our product range. If you can't find what you're looking for, ask... or look online

Vices

Welding Vice

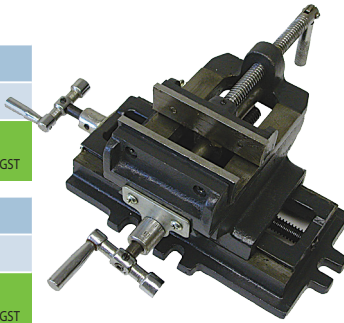
Model:	WV100
Jaw Width (mm):	100
\$129.00 <small>inc GST</small>	



Model:	WV125
Jaw Width (mm):	125
\$249.00 <small>inc GST</small>	

Cross Slide Vice

Model:	CV4
Jaw Width (mm):	100
\$154.00 <small>inc GST</small>	

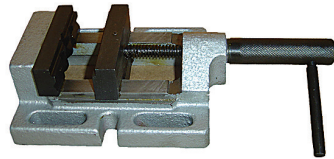


Model:	CV6
Jaw Width (mm):	150
\$247.00 <small>inc GST</small>	

Guild-screw Leading-in Vice

Model:	Q19100E
Jaw Width (mm):	100
\$99.00 <small>inc GST</small>	

Model:	Q19150E
Jaw Width (mm):	150
\$159.00 <small>inc GST</small>	



Model:	Q19120E
Jaw Width (mm):	125
\$121.00 <small>inc GST</small>	

75mm Drill Press Vice

Model:	DPV3
\$38.00 <small>inc GST</small>	

150mm Drill Press Vice

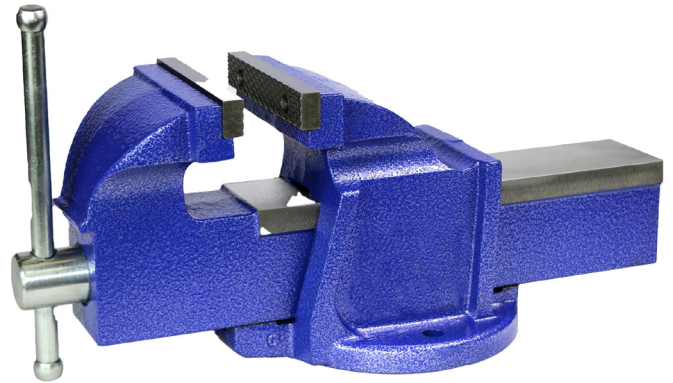
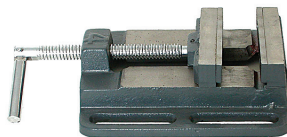
Model:	DPV6
\$72.00 <small>inc GST</small>	

100mm Drill Press Vice

Model:	DPV4
\$48.00 <small>inc GST</small>	

125mm Drill Press Vice

Model:	DPV5
\$62.00 <small>inc GST</small>	



Bench Vice

Model:	BV100
Jaw Width (mm):	100
\$159.00 <small>inc GST</small>	

Model:	BV150
Jaw Width (mm):	150
\$329.00 <small>inc GST</small>	

Model:	BV125
Jaw Width (mm):	125
\$249.00 <small>inc GST</small>	

Model:	BV200
Jaw Width (mm):	200
\$489.00 <small>inc GST</small>	

IF YOU'RE SERIOUS ABOUT YOUR TOOLS YOU SHOULD BE CHOOSING TOOLINE



Fox wedge

Model:	FW125
Size (m):	3-8
\$16.40 <small>inc GST</small>	

 TOOLINE.CO.NZ



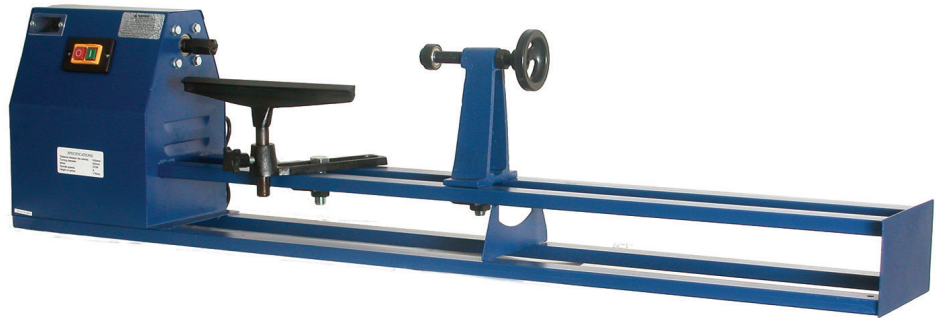
Wood Lathes

Wood Lathe

Model:	WL1000I
Lightweight wood lathe for the domestic workshop.	

Specifications:	
Speed range (rpm):	850 - 2,510
Max turning diameter (mm):	375
Distance between centres (mm):	1,000
Weight (Kg):	27
Motor (W):	375

\$439.00 inc GST

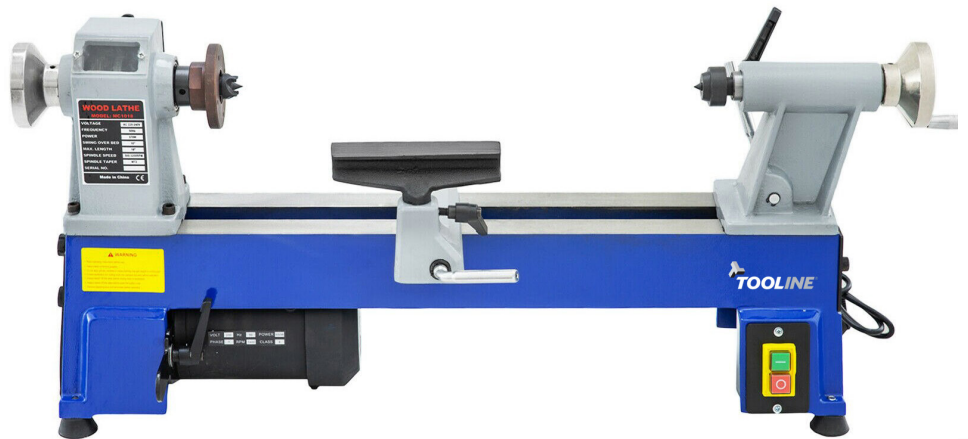


Wood Lathe

Model:	WL457
Heavy duty wood lathe for the domestic workshop.	

Specifications:	
Speed range (rpm):	5,760 - 3,700
Max turning diameter (mm):	245
Distance between centres (mm):	457
Weight (Kg):	34
Motor (W):	370

\$779.00 inc GST



Wood Lathe

Model:	WL1000FV
Variable speed for convenience. Head rotates for bowl turning. Comes with workstand.	

Specifications:	
Variable Speed (rpm):	500 - 2,000
Max turning diameter (mm):	310
Distance between centre (mm):	910
Weight (Kg):	92
Motor (W):	550

\$1,198.00 inc GST



TOOLINE®

Generators, Inverters, Compressors

See our special guide to
**GENERATORS
& INVERTERS**

TOOLINE®

EVERYTHING YOU NEED TO KNOW ABOUT GENERATORS & INVERTERS

Your questions answered...
READ THIS BEFORE YOU MAKE YOUR CHOICE!
www.tooline.co.nz



Compressors Direct Drive

Compressor –
Single Phase, Direct Drive

Model:	AC2025		
General purpose compressor.			
Specifications:			
Pump displacement (L/min):	200		
Free air delivery (L/min):	122		
Weight (Kg):	22.5		
Tank (L):	24	Motor (W):	1,500

\$312.00 inc GST



Compressor –
Single Phase, Direct Drive

Model:	AC2041		
General purpose compressor.			
Specifications:			
Pump displacement (L/min):	200		
Free air delivery (L/min):	122		
Weight (Kg):	30		
Tank (L):	40	Motor (W):	1,500

\$399.00 inc GST



Compressor –
Single Phase, Direct Drive

Model:	AC2551		
50 Litre compressor when extra air storage is required.			
Specifications:			
Pump displacement (L/min):	230		
Free air delivery (L/min):	140		
Weight (Kg):	35.5		
Tank (L):	50	Motor (W):	1,800

\$449.00 inc GST



Compressor –
Single Phase, Direct Drive

Model:	AC3050V		
50 Litre tank, twin cylinder for quiet running.			
Specifications:			
Pump displacement (L/min):	356		
Free air delivery (L/min):	215		
Tank (L):	50	Motor (W):	2,000

\$639.00 inc GST



When you're working with tools, you should be working with Tooline.

Compressors Belt Drive

Compressor – Single Phase, Belt Drive

Introductory belt compressor.

Model: AC2250

Specifications:

Pump displacement (L/min): 312
Free air delivery (L/min): 187
Tank (L): 50 Motor (W): 2,000

\$899.00

inc GST



Compressor – Single Phase, Belt Drive

Model: CCS50-268

- Controlled cooling system
- High pressure - 145psi.

Specifications:

Pump displacement (L/min): 280
Free air delivery (L/min): 188
Tank (L): 50 Motor (W): 1,500

\$1,269.00

inc GST



Compressor – Single Phase, Belt Drive

Model: CCS50-360

- Controlled cooling system
- High pressure - 145psi.

Specifications:

Pump displacement (L/min): 334
Free air delivery (L/min): 247
Tank (L): 50 Motor (W): 2,200

\$1,399.00

inc GST



Compressor – Single Phase, Belt Drive

Model: CCS100-360

- Controlled cooling system
- High pressure - 145psi.

Specifications:

Pump displacement (L/min): 350
Free air delivery (L/min): 247
Tank (L): 100 Motor (W): 2,200

\$1,649.00

inc GST



Compressor – Single Phase, Belt Drive

Model: Puma 17

An additional cylinder (3 in total) makes this suitable for most industrial air tools. Tough and efficient, it runs smoothly and provides for all of your compressor needs. Low current draw at cut-out.

Specifications:

Pump displacement (L/min): 420
Free air delivery (L/min): 305
Tank (L): 58 Motor (W): 2,200

\$2,229.00

inc GST



Compressors Oilless

6L Oilless Compressor

Lightweight and extremely quiet running.

Model: AC60L

Specifications:

Free air delivery (L/min): 100
Tank (L): 6 Motor (W): 750

\$389.00



Compressor – Single Phase, Oilless

Whisper quiet running.

Model: AC1024OL

Specifications:

Free air delivery (L/min): 100
Tank (L): 24 Motor (W): 750

\$389.00



Compressor – Single Phase, Oilless

Quiet running with extra tank capacity.

Model: AC1150OL

Specifications:

Free air delivery (L/min): 145
Tank (L): 50 Motor (W): 1100

\$509.00



Compressor – Single Phase, Oilless

Quiet running, high tank capacity, and high free air delivery.

Model: AC2250OL

Specifications:

Free air delivery (L/min): 295
Tank (L): 50 Motor (W): 2200

\$749.00



Compressors

Compressors Petrol

Compressor – Petrol

Model: AC24/50

A lightweight and convenient compressor that's easily transportable. Auto idle.

Specifications:

Pump displacement (L/min):	312
Free air delivery (L/min):	187
Start:	Recoil
Weight (Kg):	92
Tank (L):	50
Motor (HP):	6.5 Lifan

\$1,349.00 inc GST



Compressor – Petrol

Model: PUMA 5520G

A larger tank with Honda engine for the professional. Auto idle.

Specifications:

Pump displacement (L/min):	450
Free air delivery (L/min):	315
Start:	Recoil
Weight (Kg)	92
Tank (L):	75
Motor (HP):	5.5

\$2,799.00 inc GST



Compressor – Petrol

Model: PUMA 30

Large portable compressor for industry, Honda engine. Auto idle.

Specifications:

Pump displacement (L/min):	970
Free air delivery (L/min):	660
Start:	Recoil
Weight (Kg):	205
Tank (L):	120
Motor (HP):	11

\$6,198.00 inc GST



Compressors Three Phase

Compressor – 3 Phase

Model: Puma 28

Specifications:

Pump displacement (L/min):	970
Pressure range (bar):	2.4 - 10 (35 - 150psi)
Free air delivery (L/min):	610
Tank (L):	170
Motor (kw):	4.0 TECO

\$4,229.00 inc GST



Compressor – 3 Phase

Model: Puma 55

Specifications:

Pump displacement (L/min):	1,680
Pressure range (bar):	2.4 - 10 (35 - 150psi)
Free air delivery (L/min):	1,190
Tank (L):	259
Motor (kw):	7.5 TECO

\$5,987.00 inc GST



Compressor Oil

Model: TLA 470

1 Litre

\$32.00 inc GST



Airtool Oil

Model: TLA 472

250ml.

\$12.99 inc GST



You never regret buying a good product



Compressors / Pumps

Bare Pump

Model:	PE75
Suitable for Puma 28.	

Specifications:	
Displacement (L/min):	970

\$1,998.00 inc GST

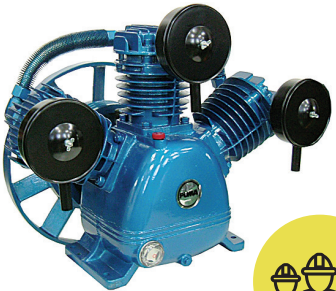


Bare Pump

Model:	PE150
Suitable for Puma 55.	

Specifications:	
Displacement (L/min):	1,680

\$2,890.00 inc GST



Bare Pump

Model:	PE100
Suitable for Puma 40.	

Specifications:	
Displacement (L/min):	1,215

\$2,190.00 inc GST



ACCESSORIES FOR PRESSURE WASHERS



Turbo Nozzle

Model:	TBN2-3000-0.025
Max pressure (psi):	3,000
Orifice ("):	0.025

\$79.00



Variable Nozzle

Model:	VAN2-HC-0.025
Orifice ("):	0.025

\$25.00

Model:	TBN2-3000-0.040
Max pressure (psi):	3,000
Orifice ("):	0.040

\$79.00

Model:	VAN2-HC-0.045
Orifice ("):	0.040

\$25.00

15" Heavy Duty Surface Cleaner

Model:	SSFC - SD15
Heavy duty surface cleaner	
Max pressure (psi):	3,600
Max temperature orifice (°C):	20

\$359.00 inc GST



18" Heavy Duty Surface Cleaner

Model:	SSFC - SD18
Includes handle.	
Max pressure (psi):	400
Max temperature orifice (°C):	20

\$919.00 inc GST



Commercial Pressure Washer – Petrol

Model:	PW2801
2,800psi pressure washer with turbo lance and 5 quick nozzles.	
Maximum pressure (psi):	2,800
Motor (HP):	6.5
Water flow (L/min):	11.3
Weight (Kg):	35

\$969.00 inc GST



Commercial Pressure Washer - Petrol

Model:	PW3600
Impressive 3,600psi pressure washer with turbo lance and 5 quick nozzles.	
Maximum pressure (psi):	3,600psi
Motor (HP):	13
Water flow (L/min):	17
Weight (Kg):	59

\$1,795.00 inc GST



Professional Air Tools

TRADE CHOICE

Die Grinder

Code:	AT-7033LM
6mm extended nose.	
\$169.00 <small>inc GST</small>	



Die Grinder

Code:	AT-7033M
6mm heavy duty.	
\$99.00 <small>inc GST</small>	



Die Grinder

Code:	AT-7132M
6mm medium duty.	
\$122.00 <small>inc GST</small>	



Die Grinder

Code:	AT-7132MK
16 Piece, 6mm die grinder kit. Medium duty.	
\$184.00 <small>inc GST</small>	



Die Grinder

Code:	AT-7134M
6mm medium duty die grinder (right angle).	
\$169.00 <small>inc GST</small>	



Drill

Code:	AT-4031
3/8" reversible.	
\$144.00 <small>inc GST</small>	



Drill

Code:	AT-4035
Medium duty 3/8" angle.	
\$246.00 <small>inc GST</small>	



Drill

Code:	AT-4038
Medium duty 3/8" straight (2,600rpm).	
\$138.00 <small>inc GST</small>	



Drill

Code:	AT-4141
Heavy duty 1/2" reversible with slide handle and geared chuck.	
\$269.00 <small>inc GST</small>	



Impact Wrench

Code:	AT-5044K
1/2" heavy duty impact wrench kit.	
\$386.00 <small>inc GST</small>	



Impact Wrench

Code:	AT-5056
3/8" heavy duty ratchet wrench.	
\$199.00 <small>inc GST</small>	



Impact Wrench Kit

Code:	AT-5056K
3/8" heavy duty ratchet wrench with 17 piece kit.	
\$246.00 <small>inc GST</small>	



Impact Wrench

Code:	AT-5057
1/2" heavy duty ratchet wrench.	
\$184.00 <small>inc GST</small>	



Impact Wrench

Code:	AT-5066L
Heavy duty 3/4" drive with twin hammer.	
\$839.00 <small>inc GST</small>	
(\$699.00 for AT-5066)	



Impact Wrench

Code:	AT-5088
1" heavy duty 1" drive and 8" anvil. Double hammer mechanism.	
\$2,390.00 <small>inc GST</small>	



Impact Wrench

Code:	AT-5133
3/8" impact wrench (jumbo hammer).	
\$339.00 <small>inc GST</small>	



Impact Wrench

Code:	AT-5130
3/8" impact wrench (rocking dog - butterfly).	
\$138.00 <small>inc GST</small>	



Impact Wrench

Code:	AT-5141
1/2" impact wrench with pin clutch.	
\$386.00 <small>inc GST</small>	



Impact Wrench

Code:	AT-5148
1/2" impact wrench with twin hammer.	
\$499.00 <small>inc GST</small>	



Spray Gun

Code:	AS-1001
Heavy duty, gravity feed.	
\$184.00 <small>inc GST</small>	



Spray Gun

Code:	AS-1002
Gravity air spray gun with 600cc cup.	
\$229.00 <small>inc GST</small>	



Spray Gun

Code:	AS-1040R
High pressure spray gun (simple control).	
\$199.00 <small>inc GST</small>	



Spray Gun with Pot

Code:	AS-1070
2 Litre spray tank with spray gun.	
\$499.00 <small>inc GST</small>	



Spray Gun with Tank

Code:	AS-1180
2 1/4 gallon paint tank with spray gun.	
\$629.00 <small>inc GST</small>	



Orbital Sander

Code:	AT-7004DS
Heavy duty 150mm sander with stick pad.	
\$479.00 <small>inc GST</small>	



Belt Sander 10 x 33mm

Code:	AT-7009
Heavy duty finger sander 25/64" x 13" (10 x 33mm).	
\$246.00 <small>inc GST</small>	



Belt Sander 20 x 520mm

Code:	AT-7010
Heavy duty belt type sander 20 x 520mm.	
\$419.00 <small>inc GST</small>	



Angle Grinder – 100mm

Code:	AT-7036
100mm level throttle type, medium duty angle grinder.	
\$299.00 <small>inc GST</small>	



Angle Grinder – 125mm

Code:	AT-7037
125mm level throttle type, medium duty angle grinder.	
\$329.00 <small>inc GST</small>	



Hydraulic Riveter 3/16" Medium Duty

Code:	AT-6015
3/16" hydraulic riveter (medium duty).	
\$231.00 <small>inc GST</small>	



Hydraulic Riveter 3/16" Kit

Code:	AT-6015K
3/16" hydraulic riveter kit (medium duty).	
\$299.00 <small>inc GST</small>	



Hydraulic Riveter 3/16" Heavy Duty

Code:	AT-6218
3/16" hydraulic riveter (heavy duty).	
\$820.00 <small>inc GST</small>	



Impact Screwdriver

Code:	AT-4063
Low rotational speed screwdriver (2,500rpm).	
\$215.00 <small>inc GST</small>	



Cushion Clutch Screwdriver – Slow Revving

Code:	AT-4080A
Adjustable clutch screwdriver piston type 800rpm.	
\$246.00 <small>inc GST</small>	



Metal Shears

Code:	AT-6021
\$199.00 <small>inc GST</small>	



3" Cut Off Tool

Code:	AT-6027
Medium duty, 73mm disc.	
\$107.00 <small>inc GST</small>	



Body Saw

Code:	AT-6011
Medium duty, front exhaust.	
\$169.00 <small>inc GST</small>	



Body Saw (Front Exhaust) Kit

Code:	AT-6011K
Medium duty, body saw with 18 piece kit.	
\$246.00 <small>inc GST</small>	



Nibbler

Code:	AT-6025
\$184.00 <small>inc GST</small>	



Sand Blasting Kit

Code:	AA-3071
Sand blasting kit.	
\$68.00 <small>inc GST</small>	



Polisher

Code:	AT-7074
7" angle polisher, medium duty.	
\$359.00 <small>inc GST</small>	



Tyre Gauge

Code:	AA-6004
Professional 3 function tyre gauge.	
\$146.00 <small>inc GST</small>	



Blow Gun

Code:	AA-5006-3
300mm tube.	
\$19.00 <small>inc GST</small>	



Blow Gun

Code:	AA-5018
110mm tube, adjustable flow.	
\$22.00 <small>inc GST</small>	



Blow Gun

Code:	AA-5018-3
340mm tube, adjustable flow.	
\$26.00 <small>inc GST</small>	



Blow Gun

Code:	AA-50180-5
500mm tube, adjustable flow.	
\$31.00 <small>inc GST</small>	



Flux Chipper

Code:	AT-2501
Heavy duty industrial flux chipper.	
\$469.00 <small>inc GST</small>	



Filter/Regulator

Code:	AA-2120FR
Control unit for PUMA 15, 17 compressors.	
\$127.00 <small>inc GST</small>	



Tyre Gauge

Code:	AA-6008
3 function tyre gauge.	
\$53.00 <small>inc GST</small>	



Needle Scaler

Code:	AT-2500
Heavy duty needle scaler. Needle set available.	
\$469.00 <small>inc GST</small>	



Hammer

Code:	AT-2015
Medium duty 190mm hammer (round).	
\$139.00 <small>inc GST</small>	



Hammer 9 Piece Kit

Code:	AT-2012KR
Medium duty hammer with 9 piece kit.	
\$215.00 <small>inc GST</small>	



Needle Scaler

Code:	AT2505
Heavy duty needle scaler. Needle set available.	
\$469.00 <small>inc GST</small>	



Air Speed Nailer

Code:	AT-3100
1,000bpm.	
\$324.00 <small>inc GST</small>	



Blow Gun

Code:	AA-3011
Aluminum blow gun.	
\$19.00 <small>inc GST</small>	



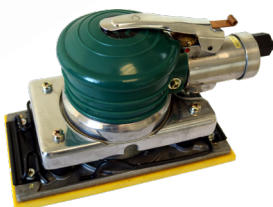
Wonder Gun Kit

Code:	AA-5005
Wonder gun kit.	
\$96.00 <small>inc GST</small>	



1/3 Sheet Orbital Sander

Code:	AT-7025
Jitterbug	
\$262.00 <small>inc GST</small>	



Under Coating Gun

Code:	AA-5001
Under coating gun.	
\$74.00 <small>inc GST</small>	





TOOLINE®

What you need to know about *Airless Spraying*

INSIDE OR OUT - BIG OR SMALL SPACES
ROOF, WALLS, FENCES | TIME-SAVING SUPERB FINISHES

Get one now.
Paint sprayers are
a great tool for EVERYONE.

It used to be something you'd only expect professionals to use, but now they're easier and more accessible for all of us. Whether you're working as a painter, or doing some DIY, we've got the airless sprayer for you.

Inside or out, they're quick and easy to use and can give that really slick, professional looking finish.

Get the right tool for the job... read more here
See inside.

FAST & EASY

TRUSTED PERFORMANCE

PRICED FOR YOUR BUDGET

COMPREHENSIVE RANGE
OF NOZZLES



RETIRE THE
PAINTBRUSH

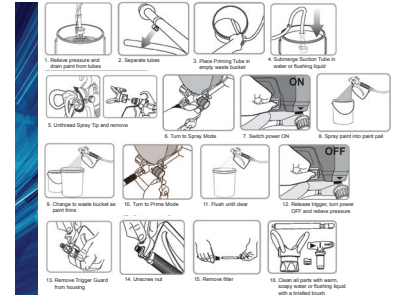


Cleaning up

The job's not over until you've cleaned up.

When you've finished spraying, sorry, but you're not done. Remember you need to take your paint sprayer apart and clean it after every use. If you don't it could clog up and a clogged filter or tip can also create messy splatter. You don't want to be replacing things when a few minutes of cleaning up after yourself means you'll be ready to go the next time you want to use your sprayer.

Here's a step by step guide to cleaning:



It's easy to keep your airless sprayer in top condition and after the first time, it's so easy to do to ensure your unit will be ready for its next job...

Clear your tips with some short burst of water with the tip set to 'revert'. Clean tips with a soft brush. If you're storing them for a while, do so in a sealed container of water or solvent. Clean and check your filters. If it's more than 20% clogged, replace the filter. Do multiple rinses to clean your airless sprayer. Start with a dirty rinse and a clean rinse, then another rinse with clean water. If you're storing your sprayer over night, water is OK, but thinner is better. Remember not to store the unit under pressure.

It's all about your paint

Which sort of paint or stain or coating are you using? Many sprayers use undiluted paint but some work best with a lighter mix. Technically, this is called less viscosity. Often paints at their normal consistency can be too thick for a standard paint sprayer and can clog up your gear.

In these instances, be sure to dilute your solution according to the specifications, either that come with your sprayer or that are detailed on the paint can or the manufacturer's website. Your paint will go further and you're likely to get a smoother, more consistent coverage.

Ideal temperatures for spraying depends on what type of paint you're using.

For Oil-Based Paints, it's commonly between 4°C and 32°C. For Water or Latex-Based Paints it's a bit higher at between 10°C and 30°C because these paints don't handle well at lower temperatures.

The most commonly agreed temperature range for the best and easiest painting is between 10°C and 25°C.

Many paint suppliers have helpful information about their products, which tips are best used with which formulation and other important details. Don't be afraid to ask. It'll help you to get the best possible result.



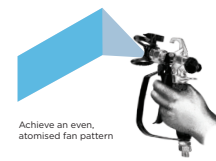
Every coating contains four basic things:

A binding element this holds the coating together.

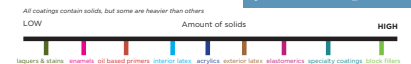
Pigments Usually colours or corrosion resistance.

Solvent A substance to either dissolve one of the other elements, or dilute or thin the overall formulation.

Additives. There are a lot of reasons additives incorporated into coatings, sometimes to help applications, enhance the end result, or to help with manufacture.



Not all paints (or other coatings) are the same. So adapt what you're doing to suit what you're working with.



In field trials, airless sprayers have been shown to be up to

10x FASTER

than using conventional paint brushes.

You can paint or coat anything more quickly. Added speed means you get done in less time, with less work. And that's really important if you've got limited time - outside for example with a short weather window. It's been estimated airless spraying is up to ten times faster than using a standard paint brush!

Airless systems don't use compressed air - as the name suggests, but rather high pressure and a tip to regulate the flow.

Home Series Air Tools

Coupler - Air Plug

Code: AP 1/4 M
ARO 1/4" Connector male in display pack.

\$2.99 inc GST

Code: AP 1/4 F
ARO 1/4" Connector Female in display pack.

\$2.99 inc GST



5 Piece Quick Coupler

Code: AA-4022
ARO 1/4" 5 piece quick couple kit.

\$28.00 inc GST



3-Way Quick Coupler

Code: AQC-3A
ARO 1/4" 3-way quick coupler.

\$56.00 inc GST



Quick Coupler

Code: QC 1/4 F
ARO 1/4" female in display pack.

\$7.99 inc GST

Code: QC 1/4 M
ARO 1/4" male in display pack.

\$7.99 inc GST



2-Way Quick Coupler

Code: AQC-2B
ARO 1/4" 2-way quick coupler.

\$37.00 inc GST



3-Way Quick Coupler

Code: AQC-3B
ARO 1/4" 3-way quick coupler.

\$56.00 inc GST



Coupler - Air Plug

Code: APM Nitto
Nitto 1/4" BSP connector male in display pack.

\$3.49 inc GST

Code: APF Nitto
Nitto 1/4" connector female in display pack.

\$3.49 inc GST



Hose Barb

Code: HB 1/4 M
ARO Connector with hose barb in display pack.

\$2.99 inc GST

Code: HB 1/4 BSP
1/4" Connector with hose barb in display pack.

\$2.99 inc GST



Swivel

Code: AR-3010
1/4" swivel connection.

\$23.00 inc GST



Cut off tool

Code: RP 27620
Air consumption: 128 l/m/n

\$64.00 inc GST



Quick Coupler

Code: QCM Nitto
Nitto 1/4" BSP male in display pack.

\$11.99 inc GST

Code: QCF Nitto
Nitto 1/4" BSP female in display pack.

\$11.99 inc GST

Tyre Inflating Gun

Code: RP 8037-2
150psi rated pressure.

\$28.00 inc GST



Hex Nipple

Code: PE1024
1/4" x 1/4" BSP coupler in display pack.

\$6.99 inc GST



Speed Nailer

Code: MSN90
Nail head width: 3-11mm
Max nail length: 90mm

\$149.00



Air Body Saw

Code: RP 7602
\$79.90 inc GST



Reduce Hex Nipple

Code: HN 1/4 - 1/8
1/4" - 1/8" BSP

\$7.99 inc GST



Mini Oiler-Brass

Code: RP8055
\$14.00 inc GST



Air Filter

Code: RP8054
\$22.00 inc GST



Die Grinder Kit

Code: RP 27313K
14 piece die grinder kit.

\$62.00 inc GST



Needle Set - 3 piece

Code: RP 8049
For bicycles, balls, tubes, etc.

\$16.00 inc GST



Spray Gun

Code:	AB17S
HVLP Spray Gun. 1,000ml cup.	
\$49.00 inc GST	



Touch Up Spray Gun

Code:	M308
High pressure 200ml cup.	
\$60.00 inc GST	



Air Brush Set

Code:	AB51
\$38.00 inc GST	



Spray Gun Kit - 5 Piece

Code:	RP8031K5
5 piece suction spray gun kit.	
\$112.00 inc GST	



Spray Gun Cleaning Kit - 13 Piece

Code:	CK130
\$9.99 inc GST	



Body Washing Gun

Code:	R8036
Rated pressure 90psi.	
\$33.00 inc GST	



Mini Oil Free Compressor

Code:	V-505
150W, 42.5psi.	
\$209.00 inc GST	



Air Blow Gun 100mm

Code:	R8035-4
\$15.20 inc GST	



Spray Gun

Code:	R827B
Gravity feed.	
\$82.00 inc GST	



Air Blow Gun

Code:	RP8032-1
Metal body.	
\$19.50 inc GST	



Spray gun

Code:	RP4001
\$82.00 inc GST	



Low pressure spray gun

Code:	RP472
\$45.00 inc GST	



TOOLINE

Your guide to COMPRESSORS:

OUR AIR FORCE.

Harnessing the air around us for your air tools is what a compressor does. It stores air at a predetermined pressure, usually 116psi (8bar), and then releases it through the right spray guns - require more than 116psi (8bar) to operate well. We have 4 models in the range reaching up to 145psi (10bar). Choose from this wide selection. We have an efficient, high performing compressor to suit...and at the right price.

HOW DO YOU KNOW WHICH ONE IS BEST FOR YOU?

Choose from three types of drive systems: direct drive, oilless direct drive or belt drive. Direct driven compressors have FAD between 50l/min to 215l/min, are relatively noisy but cost effective. If noise is an issue, direct drive oilless compressors have similar flow but are very quiet and don't require oil changes. Belt driven compressors' FAD ranges from 188l/min to 305l/min, run smoothly and quietly and should last much longer than direct drive compressors. Belt driven compressors that require three phase power have superior Free Air Delivery - up to 1190l/min, but are bigger and bulkier and usually need a forklift to move them.

AC2025 DIRECT DRIVE
Tank size: 20 litres
Max pressure: 100psi
FAD: 120l/min (14.3 cfm)

AC3050V DIRECT DRIVE
Tank size: 30 litres
Max pressure: 100psi
FAD: 195l/min

OUR MOST POPULAR MODELS

There's a COMPRESSOR to suit you

AC10240L OILLESS DIRECT DRIVE
Tank size: 24 litres
Max pressure: 100psi
FAD: 100l/min (3.53 cfm)
Super quiet - with water trap

AC20500L OILLESS DIRECT DRIVE
Tank size: 20 litres
Max pressure: 100psi
FAD: 200l/min (7.06 cfm)
...with water trap

CCS50-360 BELT DRIVE
Tank size: 50 litres
Max pressure: 145psi
FAD: 447l/min (15.97 cfm)
Centralized Cooling System

PUMA17 BELT DRIVE
Tank size: 17 litres
Max pressure: 100psi
FAD: 105l/min (3.77 cfm)
with 100psi regulator

tooline.co.nz

At a glance:

- Air compressors take the standard air that we breathe and literally 'compress' it - under pressure, storing it in tanks to use as you need it.
- If you skimp on a cheaper, less efficient option, your tool may not work as it should because it won't have enough pressure.
- Match your compressor's FAD (Free Air Delivery) to the capacity needed by your air tools. Remember that more is better. At least 10% extra is a good guide. FAD is measured by an Australasian protocol.
- Choose the size and drive system you need, based on your requirements, including portability.
- Backed by Tooline Warranty!



Heavy Duty Framing Nailer

Code:	CHF9034C
Nail Size (mm):	2.9 - 3.3
Nail Length (mm):	50 - 90
Carry case.	

\$257.00 inc GST



Heavy Duty Finishing Nailer

Code:	T64C
Nail Size:	Ga 16
Nail Length (mm):	25 - 64
Carry case.	

\$199.00 inc GST



2-1 Air Braid Nailer / Narrow Crown Stapler

Code:	SF5040
Nail Size:	Ga 18
Staple Size:	Ga 18
Nail Length (mm):	10 - 50
Staple Length (mm):	16 - 40
Carry case.	

\$99.00 inc GST

Narrow Crown Stapler

Code:	9040C
Staple Size:	Ga 18
Staple Length (mm):	16 - 40
Carry case.	

\$99.00 inc GST

Wide Crown Stapler

Code:	8016
Staple Size:	Ga 21
Staple Length (mm):	6 - 16
Carry case.	

\$89.00 inc GST





RONGPENG

R

RELIABILITY, QUALITY & EFFICIENCY - those are the keywords for RONGPENG. With over 20 years specific experience in the sector, they've led the way with innovation and high quality standards. With over 100,000 sq metres of manufacturing space and more than 1,200 employees, this is a major Chinese manufacturer supplying excellent product.



Rongpeng Air Agitator

Model:	R8410
Started by low pressure, highly flexible agitation for all kinds of paint	
Free speed (rpm):	2,000
Total height (mm):	650
Stirrer height (mm):	350
Support frame height (mm):	430
Weight (Kg):	6

\$589.00

inc GST



Rongpeng Diaphragm Pump

Model:	R8411
Suitable for all kinds of liquid.	
Pressure ratio:	1:1
Operating pressure (bar):	4 - 7
Max. free flow (L/min):	10
Weight (Kg):	7.6

\$619.00

inc GST



Puma Double Diaphragm Pump

Model:	SP-1580
Specifications:	
Pressure ratio:	1:1
Air pressure (Kg/cm ²):	1-5
Delivery 5L (Kg/cm ²):	0.4
Delivery 7.5L (Kg/cm ²):	1
Delivery 10.5L (Kg/cm ²):	2
Weight (Kg):	10.5

\$1,224.00

inc GST

Airless Paint Sprayer

Code:	R550
Heavy duty metal construction. Supports 2 guns. Wheels and handle included.	
Max tip size (Single gun)	.027"
Max tip size (Twin gun)	.019"
Max pressure (psi):	3,300psi
Max flow rate (L/min):	4
Hose (m):	15
Motor (W):	2,800
Weight (Kg):	23.6

\$2,789.00

inc GST



Airless Paint Sprayer

Model:	R 515
Solid, heavy duty metal construction. Supports two guns.	
Max tip size (Single gun):	0.025"
Max tip size (Twin gun):	0.019"
Max pressure (psi):	3,300
Max flow rate (L/min):	3.5
Hose (m):	15
Motor (W):	2200
Weight (Kg):	19

\$2,199.00

inc GST



Our Leading Brands:

Tooline is a trusted name in the New Zealand tool sector. Not only known for its range of high performing, reliable tools at a great price, Tooline also has dependable after sales service and support that's based here, locally. We put our name on quality products we stand behind and proudly import into the country. Rely on Tooline.



Puma has been one of our most popular brands for a great many years now. They've been around since the late 1970s with a core business philosophy of Cooperation & Honesty. That's backed up by research and innovation in their field. From Taiwan to us, with a promise of quality.



...out of TAIWAN

starmix

From Germany comes Starmix with over 100 years of vacuum cleaner expertise. Their sweepers have become industry standard, with unequalled performance, reliability and ease of use - and all at a great price.



ex GERMANY

Also engineered in Germany, Haaga offers the best in sweeping technology. to give us a comprehensive range that's more than fit for purpose.

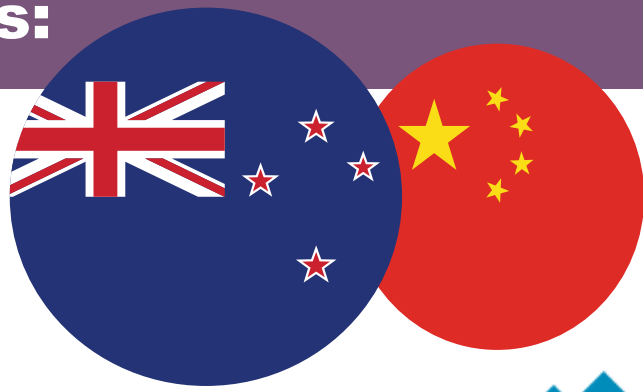


Alongside other great brands like...

VALU-AIR
Air Tools

VOYLET[®]

**WHERE IN THE WORLD
WOULD YOU GET THIS CHOICE?**



sourced
from
CHINA



RONGPENG

Since the introduction of RONGPENG tools in 1998, this highly respected manufacturer from China has anticipated customer needs with an ever-growing range of tools. industry-leading in their innovative way of solving your everyday challenges.



Hoses



Nylon hose 1/4"
 Code: AA-1012
 1/4" x 25' nylon hose with BSP fittings.
\$19.00 inc GST



Rubber Braid Air Hose

Code: AH-13A13025
 Rubber braid hose with ARO fittings 25'
\$96.00 inc GST

Rubber Braid Air Hose

Code: AH-13A13050
 Rubber braid hose with ARO fittings 50'
\$179.00 inc GST



10m Rubber Air Hose

Code: R1016
 Roll of 3/8" rubber air hose with 1/4" ARO fittings.
\$58.00 inc GST

20m Rubber Air Hose

Code: R2016
 Roll of 3/8" rubber air hose with 1/4" ARO fittings.
\$99.00 inc GST



PU Braid recoil hose

Code: AH-0365-25
 25' x 10mm hose with 1/4 BSP fitting.
\$52.00 inc GST

Check out our great air hoses & accessories and their great prices!



10m PVC Air Hose

Code: PVC1016
 Roll of 3/8" PVC air hose with 1/4" ARO fittings.
\$38.00 inc GST

30m PVC Air Hose

Code: PVC3016
\$92.00 inc GST

20m PVC Air Hose

Code: PVC2016
\$60.00 inc GST

100m PVC Air Hose

Code: PVC10016
 Roll of 3/8" PVC air hose with no fittings.
\$254.00 inc GST



Concrete Mixer

Model:	CM125
Specifications:	
Drum capacity (L):	125
Drum mouth (mm):	385
Weight (Kg):	60
Motor (W):	550

\$749.00



Concrete Mixer

Model:	CM130
Specifications:	
Drum capacity (L):	135
Drum mouth (mm):	385
Weight (Kg):	52
Motor (W):	550

\$749.00



Log Splitter - Petrol

Model:	LS28
Specifications:	
Splitting force (Ton):	28
Log capacity (mm):	650
Motor (HP):	6.5 Briggs & Stratton
Weight (Kg):	230.6

\$3,450.00

Log Splitter - Electric

Model:	LS5
Specifications:	
Splitting force (Ton):	5
Log capacity (mm):	520 long 350 diameter
Motor (W):	2,200
Weight (Kg):	45

\$671.00



Stand available.
Cross wedge available.

Wood Chipper - Petrol

Model:	WC70
Chipping capacity (mm):	70
Rotor size (mm):	400 x 10
Weight (Kg):	108
Motor (HP):	6.5 Loncin

\$1,998.00



Earth Auger - Petrol

Model:	EA250
Type:	1 or 2 person
Engine:	4hp, 4 stroke (141cc)
Max speed (rpm):	200
Gear ratio:	16:1
Weight (Kg):	17

\$749.00



100, 150, 200, 250mm Augers Available,
305mm Extension Shaft available

Wood Chipper - Shredder

Model:	GS35
Chipping capacity (mm):	70
Rotor size (mm):	400 x 10
Weight (Kg):	108
Motor (w):	1,500

\$519.00



Rear Tine Tiller

Model:	RTT450
Dual rotating blades.	
Gearbox:	Forward & Reverse
Motor (cc):	196 (6.5HP)
Tilling width (mm):	450
Tilling depth (mm):	330
Weight (Kg):	92

\$2,127.00

inc GST



Front Tine Tiller

Model:	FTT760
Motor (cc):	196 (6.5HP)
Gearbox:	Forward & Reverse
Tine:	Forward
Tilling width (mm):	310, 520, 760
Tilling depth (mm):	350
Weight (Kg):	60.4

\$1,074.00

inc GST



Chainsaw Chain Sharpener

Model:	ECS 100
Motor (W):	85
Table angle:	35° Left + Right
Shaft diameter (mm):	23
Weight (Kg):	2.2

\$97.00

inc GST



Walk behind Lawn Edger

Model:	LE 228
Motor (cc):	140
Blade size (mm):	228
Cutting depth options:	6
Max bevel (°):	20
Weight (Kg):	27

\$839.00



Blades available.



Walk behind blower

Model:	WBB 240
Motor (cc):	196 (6.5HP)
Max air volume (m³/hr):	2040
Max air speed (Km/hr):	240
Weight (Kg):	40

\$1,194.00

inc GST



Walk behind String Trimmer

Model:	ST 560
Motor (cc):	159
Cutting width (mm):	560
Cutting height min (mm):	38
Cutting height max (mm):	90
Cutting heights:	5
Weight (Kg):	27

\$895.00

inc GST

Model:	PC86
Vibratory, heavy duty. Wheels included.	
Plate size (mm):	540 x 420mm
Motor (HP):	6.5 Loncin
Compaction depth (cm):	30
Weight (Kg):	86

\$1,239.00

inc GST



Plate Compactor - Petrol

Model:	PC63
Vibratory, heavy duty. Wheels and water tank included.	
Plate size (mm):	515 x 390
Motor (HP):	5.5 Loncin
Compaction depth (cm):	25
Travel speed (m/min):	25
Weight (Kg):	63

\$1,194.00

inc GST



Power Wheel barrow

Model:	PWB 500
Motor (cc):	196(6.5Hp)
Load capacity (Kg):	500
Hopper length (mm):	1050
Hopper width (mm):	750
Hopper depth (mm):	700
Weight (Kg):	170

\$3,799.00

inc GST



Power Sweeper

Model:	PS 700
Motor (cc):	196(6.5Hp)
Gearbox:	Forward & Reverse
Sweeping width (mm):	700
Broom diameter (mm):	380
Weight (Kg):	68

\$1,729.00

inc GST

Metal Lathes & Drill Mills

Metal Lathe

Model:	CQ6125VX550
Distance between centres (mm):	550
Engine (W):	550
Spindle speeds (6) (rpm):	125 - 200
Swing over bed (mm):	250
Weight (Kg):	112



Metal lathe

Model:	CQ6240X1000
Swing over bed (mm):	400
Swing over gap (mm):	520
Spindle speeds (rpm):	65 - 1810
Spindle base (mm):	52
Between centres (mm):	1080
Max cross slide (mm):	180
Weight (Kg):	640
Width of bed (mm):	218
Motor (W):	2000



Metal lathe

Model:	CQ6230X1000
Swing over bed (mm):	310
Swing over gap (mm):	450
Spindle speeds (rpm):	65 - 1810
Spindle base (mm):	38
Max cross slide (mm):	130
Max top slide (mm):	75
Max tail stock quill (mm):	100
Width of bed (mm):	181
Motor (W):	1500



Drill Mill

Model:	ZX7045
Max drilling capacity (mm):	45
Max milling capacity (mm):	Face 80 end 32
Spindle taper:	MT4
Table dimensions (mm):	800 x 240
Weight (Kg):	590
Spindle stroke (mm):	120
Spindle Speed 1:	75 - 1600
Spindle Speed 2:	150 - 1600
Motor (W):	1500

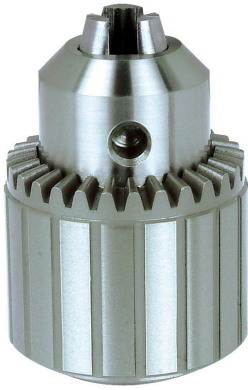


Drill Mill

Model:	ZX45
Max drilling capacity (mm):	45
Max milling capacity (mm):	Face 80 end 32
Spindle taper:	MT4
Table dimensions (mm):	800 x 240
Weight (Kg):	390
Spindle stroke (mm):	120
Spindle Speed 1:	75 - 1600
Motor (W):	1500

Chucks, Chuck keys, & Arbours

Geared Chucks



Code	Clamping width (mm)	Female thread	Key size
TLA5254	1-10	3/8" - 24UNF	2
TLA5304	1-13	1/2" - 20UNF	2
TLA5036	1-13	B16	2
TLA5050	3-16	B16	3
TLA5049	3-16	B18	3
TLA5058	5-20	B22	4

Chuck Keys



Code	Key size
TLA5165	1
TLA5167	2
TLA5168	3
TLA5169	4



Keyless Chucks

Code	Clamping width (mm)	Female thread	Hand
TLA6620	1-13	1/2" - 20UNF	2
TLA6621	1-13	1/2" - 20UNF	1



Code	Clamping width (mm)	Female thread	Hand
TLA6353	1-13	B16	2
TLA6361	3-16	5/8" - 16 UN	2
TLA6602	1-13	1/2" - 20UNF	2



Taper Arbours for Chucks



Code	Morse taper	Chuck taper
TLA5115	2	B16
TLA5116	2	B18
TLA5120	2	J3
TLA5126	3	B18
TLA5129	3	J3
TLA5125	3	B16

Sweepers

starmix [★] part of starmix haaga

Push Sweeper

Model:	Star Sweep 65
Entry level push sweeper. Compact storage.	
Sweeping performance (m ² /hr):	2,100
Brush drive:	Manual
Sweeping width (cm):	65
Container volume (L):	18
Weight (Kg):	10
\$359.00 <small>inc GST</small>	

For occasional sweeping of medium-sized areas. Ideal for sweeping the garage, yard and street, as well as for use in smaller commercial units.



**for HOME
or WORKSPACE**

**CORDLESS
BRILLANCE**



easy to use
with ergonomic
padded push
handles

push operation
or fast &
simple battery
changeover

ideal for
large,
industrial &
outdoor
spaces

Commercial Sweeper

Model:	haaga 375
Turbo sweeping system - sweeping twice in one step. Even the most fine debris is collected.	
Brush height adjustment, intuitively variable for optimal sweeping on every surface.	
High quality and long lasting disc brushes.	
Space saving storage in upright position.	
Sweeping width (cm):	75
Brush drive:	Manual
Container volume (L ²):	50
Sweeping performance (m ² /hr):	2,900
Weight (Kg):	11.1
\$1,449.00 <small>inc GST</small>	



Use for medium-sized areas up to 1,000sqm such as workshops, petrol stations and yards, for occasional sweeping.



PROFESSIONAL
GRADE



Commercial Sweeper

Model:	haaga 497 Profi
Sweeping width (cm):	97
Brush drive:	Manual
Container volume (L):	50
Sweeping performance (m ² /hr):	3,600
Weight (Kg):	15.7
\$2,589.00 <small>inc GST</small>	

For more frequent professional sweeping operations for large areas up to 2,000 sqm. Great for property management, cleaning companies, petrol stations, workshops, car parks, courtyards, warehouses and production halls.



- **GERMAN PRECISION & PERFORMANCE**
- **VERY EASY TO PUSH**
- **A NEW GENERATION OF SWEEPERS**
- **EVEN MORE DURABLE AND POWERFUL**

Forget about dirty, messy floors and put that old hard broom away. So yesterday! Now there's an option that's just so much better. The incredible sweepers redefine the way we clean up. Thought has been given not only to performance efficiency, but to all those vital ergonomic considerations.




PROFESSIONAL GRADE

Professional Sweeper

Model:	Starmix DuroSweep 77 Pro
Sweeping width (cm):	77
Brush drive:	Manual
Container volume (L):	40
Sweeping performance (m ² /hr):	3,000
Weight (Kg):	15

\$2,189.00 inc GST

For frequent professional use for very large areas up to 3,600 sqm. Easy to push thanks to turbo sweeping system and beltless drive. Wet and dry sweeping. Optimal cleaning.


NEW PRODUCT RANGE

Professional Sweeper

Model:	Starmix DuroSweep 77 Pro 18V
Sweeping width (cm):	77
Brush drive:	Battery
Container volume (L):	40
Sweeping performance (m ² /hr):	3,600
Weight without battery (Kg):	16

\$3,089.00 inc GST

Batterys + Charger not included

Light sweepings to heavy and damp. Greater sweeping performance due to disc brooms protruding on both sides for easy sweeping on curbs and walls due to additional guide rollers.




PROFESSIONAL GRADE

USES CORDLESS ALLIANCE BATTERIES FOR CROSS COMPATABILITY WITH OTHER GEAR.

Some things to consider:

Price vs Performance

What costs you more in the long term? That's the question. Buying cheap and having gear that doesn't live up to its promises or gives up the ghost too soon? Or spending just a little bit more for something that you can expect to give you year after year of robust performance? Are you a short term or long term thinker? Of course, everyone buys for the job. Just makes sure you're getting the right equipment for what you need.

Fighting for real value

Longevity & Experience

We deal with some of the leading manufacturers in the world, with years and years of experience, who are used to dealing with mass markets around the world. At that level you can't afford to not have your systems and quality control in place. And, you know how important it is to keep up competitively, with real innovation and technical advances. All these products aren't new to the trade, or fresh off the drawing board - they've been proven and preferred.

PROVEN in the TRADE

Knowing you've got local support

No one is happy dealing with bots or trying to get an answer from AI. And that's if you can find a way to contact wherever your product came from, because so often it's a game of pass the hot potato all down the line. At Tooline we believe in actually being accountable for the products we sell and standing behind them (provided you use them appropriately, of course). So, when there is a problem we've got a kiwi here to help sort things out for you.

We're HERE for you

It all adds up to a lot...

When you do the math, all the various advantages make for substantial real-world benefits. That means you can calculate a very convincing argument for making our products your first choice. Put together all the positives then take away the hassles of dealing with a raft of uncaring middlemen, of using equipment that just doesn't quite live up to its promise, or the downtime that comes from faulty gear and the equation's an easy one.

**Work
it out for
yourself**

✓ **MAKE IT A
CONSIDERED
DECISION BASED
ON ALL THE MANY
BENEFITS...**

Before you buy anything, think carefully. What do you actually need? Don't underestimate it, or you're likely to regret it later. How long do you intend to use the equipment? It's often longer than you might initially think. Ask yourself these things to save you grief in the long term.

**If you want to know more,
go online
tooline.co.nz**



**CHOOSE
TOOLINE®**

**TOOLS YOU
CAN RELY ON**



Choose wisely

All our products have been carefully sourced to offer the best, most reliable performance at the best price...

Our TOOLINE promise is to provide a great choice for our customers and to back our products up with a genuine commitment.

We're looking to provide tools you can trust to get the job done and give you carefree operation.

- ✓ Good Value
- ✓ Great Prices
- ✓ Fantastic Range
- ✓ Proven Performance
- ✓ After-sales Support
- ✓ Dependable
- ✓ Popular Brands
- ✓ Choice of Models
- ✓ Buy well



See our special guides to
**GENERATORS
& INVERTERS**
and
**AIRLESS
SPRAYERS**



Available from: